



Classic Beauty  
Concrete Masonry Value

Perfect for single  
wythe or veneer wall  
construction

12 Color Blends

The most cost-effective  
way to get the appeal  
of brick

Beautiful and Durable  
Masonry Finish

Consistent colors  
nationwide

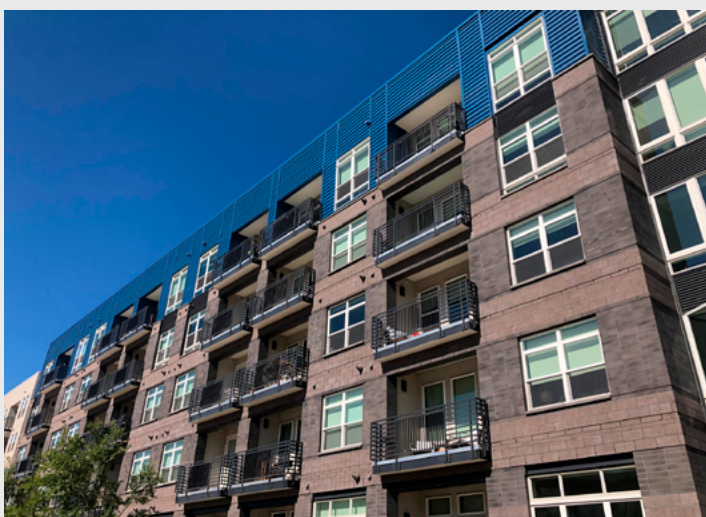
Complete Design and  
Construction Resource  
Library





# Spec-Brik

Spec-Brik is a half high (4"x16" nominal face dimension) concrete masonry unit with brick aesthetics that is perfect for partially or fully grouted single wythe walls or veneers.



## Applications

- Single wythe load bearing walls with brick aesthetics.
- Concrete masonry veneers with brick aesthetics (4" unit width) in all Climate Zones.
- Double exposed masonry single wythe walls with insulation inserts or foamed in place insulation in Climate Zones 1-2.
- Consider Spec-Brik HI-R-H pre-insulated masonry for use in all climate zones.
- Exterior exposed masonry single wythe walls with interior insulation, furring and wall-board in all Climate Zones.

## Features

- ASTM C90 – Load Bearing Masonry
- Double exposed masonry with brick aesthetics for durable architectural finishes inside and out.
- Suitable for either full or partial grout construction.
- May be constructed as a fully grouted wall to increase fire resistance up to in excess of four hour rating.
- Made with integral water repellent and optional **Water Control Technology** web design for superior moisture penetration resistance.

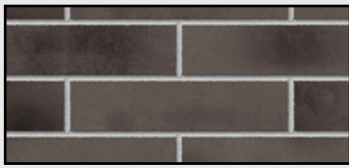
## Construction Efficiency

- Much more efficient and cost-effective than constructing clay brick walls with frame, masonry or other back-up walls
- Utilities (plumbing and electrical) readily fit in unit cores and horizontal voids.
- Offered in 4", 6", 8", 10" and 12" widths and a variety of fittings.

## Aesthetics

- Scale: 4"x16" face dimension
- Colors: Available in 12 standard brick blend colors; consistent nationwide.

Spec-Brik is available in 12 Standard Colors (custom colors are also available)



Basalt Blend



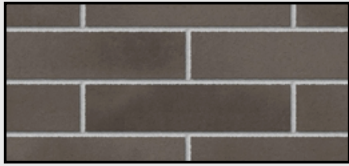
Chesapeake Blend



Delaware Blend



Dixon Blend



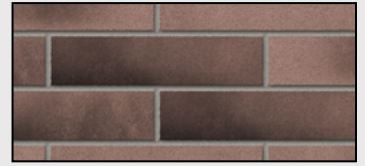
Flint Blend



Gardner Blend



Houston Blend



Jefferson City Blend



Panama City Blend



Philadelphia Blend



St. Cloud Blend



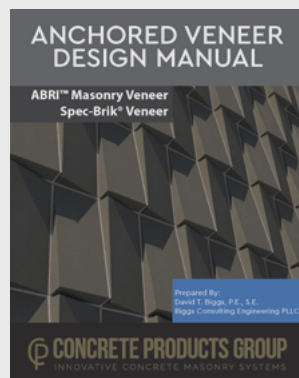
Stanton Blend

The colors above are digital renderings of blended Spec-Brik colors. Due to the limitations of the printing process and the importance of viewing masonry materials under realistic site lighting conditions, we strongly recommend viewing a sample board before making color selections and using a job site sample panel as the basis for acceptance of the final work.

## Resources for Designers

**Samples:** please contact us at [info@concreteproductsgroup.com](mailto:info@concreteproductsgroup.com) to arrange delivery of Spec-Brik samples.

**Design Tools:** we offer a variety of design and construction resources for designers, including these manuals:



### Other Resources:

- A full set of construction videos showing how to build single wythe walls with Spec-Brik.
- Guide specifications.
- Construction Details in .pdf, .dwg and .rvt formats
- Construction and design note series.
- Detailing Manuals available in interactive pdf formats.
- Color Rendering software, Masonry Designer, with Revit plug-in.

Please visit our on-line design resource center at <https://resources.concreteproductsgroup.com>

## Local Availability

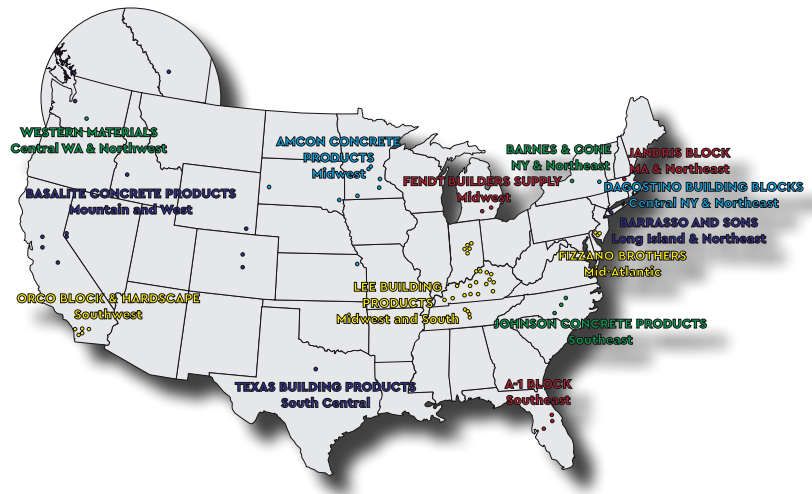
The Concrete Products Group LLC (CPG) consists of regional market leaders in the concrete products industry. CPG is organized to provide consistent, top-quality products to regional and national customers. CPG provides industry leading support and service throughout the nation.

We provide a comprehensive set of design resources to support designers, including a library of CAD Details, design notes and videos and color selection and rendering tools that are available via a Revit® plug-in.

Please contact us if we can assist with your next project.

800-789-0872

[www.concreteproductsgroup.com](http://www.concreteproductsgroup.com)



**A-1 BLOCK**  
1617 South  
Division Avenue  
Orlando, FL 32805

**AMCON CONCRETE  
PRODUCTS, LLC**  
2025 Centre Pointe Blvd.,  
Suite 300  
Mendota Heights, MN  
55120-1221

**BARNES & CONE**  
P.O. Box 280  
5894 Court St. Rd.  
Syracuse, NY  
13206-0280

**BASALITE CONCRETE  
PRODUCTS LLC**  
605 Industrial Way  
Dixon, CA  
95620

**BARRASSO AND SONS INC**  
160 Floral Park Street  
Islip Terrace, NY  
11752

**DAGOSTINO BUILDING  
BLOCKS, INC.**  
1111 Altamont Avenue  
Schenectady, NY 12303

**FENDT BUILDERS  
SUPPLY**  
22005 Gill Rd,  
Farmington, MI  
48335

**FIZZANO BROTHERS  
CONCRETE  
PRODUCTS, INC.**  
1776 Chester Pike  
Crum Lynne, PA  
19022-1299

**JANDRIS BLOCK**  
202 High St.  
Gardner, MA  
01440

**JOHNSON CONCRETE  
COMPANY**  
217 Klumac Road  
Salisbury, NC 28144

**LEE BUILDING  
PRODUCTS**  
4301 Industrial Drive  
Bowling Green, KY 42101

**ORCO BLOCK &  
HARDSCAPE**  
11100 Beach Blvd.  
Stanton, CA  
90680-0129

**TEXAS BUILDING  
PRODUCTS**  
3261 Highway 108  
Strawn, Texas 76454

**WESTERN MATERIALS  
COMPANY**  
1202 South First Street  
Yakima, WA 98901



# CONCRETE PRODUCTS GROUP

INNOVATIVE CONCRETE MASONRY SYSTEMS